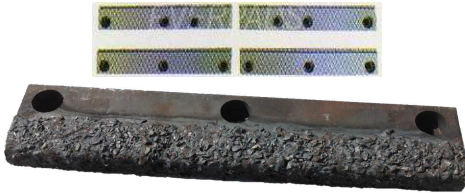




# MILLER WIRE WORKS, INC.

## Wirtgen W2000 Milling Machine Parts

### Tungsten Carbide Scrapers



KMM-146456.....\$115.16  
 KMM-146457.....\$131.39  
 KMM-146457L.....\$116.00  
 KMM-146458.....\$131.39  
 KMM-146458R.....\$116.00

### Tungsten Carbide Wall Liners



Provide dimensions for pricing

### Wear Patch 600 Brinell Plates



WP-812-38 8"x12"x3/8" (Box30) \$33.60@  
 WP-570 5"x7"x1/4" (Box25) \$11.37@  
 WP-340 3"x4"x3/16" (Box100) \$3.21@  
 WP-154 1-1/2"x4"x3/16" (Box200) \$2.53@

### Front Drum Housing Ski



Tungsten Carbide (also replaces 113001)  
 MWW-2129390-T \$101.00 each

### Front Side Ski



Tungsten Carbide  
 MWW-155630-T \$216.00 each

### Urethane Conveyor Skirt



\$40.00 each

### Everpads Conveyor Belt



Everpads Lower/Loader Belt  
 31-1/2" x 238" (800mm x 6040mm)  
 1170002.....\$2495  
 Everpads Upper/Discharge Belt  
 31-1/2" x 643" (800mm x 16320mm)  
 1170003.....\$5362 In stock

### Everpads Rollers (Idlers)

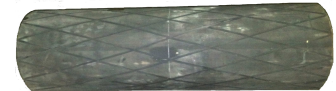


Everpads Discharge Belt Roller  
 1175401 .....\$186 In stock

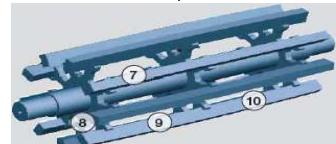


Everpads Support Conveyor Roller  
 1175301.....\$296 In stock

### Everpads Rollers (Pulleys)



Everpads Drive Roller  
 (Lagged Drum Pulley)  
 located at top of Discharge Belt  
 1175101.....\$827 In stock



Everpads Return Roller  
 1175201..Upper.....\$553  
 1175202..Lower.....\$513

### Everpads HQ Rubber Pads



Call for pricing

### Everpads Belt Guide Roller



1175501.....\$52 each  
 In Stock

### Everpads Milling Teeth



Call for Pricing

## Miller Wire Works, Inc

7429 Georgia Road, Birmingham, Alabama 35212

Phone: 205-592-0341 Toll Free: 800-783-0341 Fax: 205-599-2172

Email: screen@millerwireworks.com Website: www.millerwireworks.com